

# Mixed Input Type-C VGA HDMI HDMI 2.0 HDBaseT Switch

Support 4K@60hz YUV4:4:4, 18Gbps, HDR

## OPERATION MANUAL



**Thank you for purchasing this product. For optimum performance and safety, please read these instructions carefully before connecting, operating or adjusting this product. Please keep this manual for future reference.**

## **SURGE PROTECTION DEVICE RECOMMENDED**

**This product contains sensitive electrical components that may be damaged by electrical spikes, surges, electric shock, lightning strikes, etc. Use of surge protection systems is highly recommended in order to protect and extend the life of your equipment**

## Catalogue

1. Features.....	4
2. Package Contents.....	4
3. Specifications.....	4
4. Panel Descriptions.....	5
4.1 Menu Display.....	6
5. Application Diagram.....	9
6. Remote Control Description.....	9
7. IR system.....	10
8. PC Tool Control.....	10
8.1 Port setup.....	10
8.2 Control interface.....	11
8.3 Network Interface for device.....	12
9. Web Control.....	13
9.1 Change the IP address of your PC.....	13
9.2 Enter Web and Control.....	14
10. Command Control.....	15
11. Power Off and Reboot Input Priority Mode.....	16
12. RS232 Pass through.....	17
13. Micro USB for Firmware Upgrade.....	17
13.1 MCU application layer upgrade.....	17
13.2 GUI application layer upgrade.....	17
13.3 GUI Web upgrade.....	17
MAINTENANCE.....	19
PRODUCT SERVICE.....	19
WARRANTY.....	19
MAIL-IN SERVICE.....	19
LIMITEDWARRANTY LIMITS AND EXCLUSIONS.....	20

## 1. Features

- Incorporate HDBaseT technology
- HDMI 2.0 version support 4K@60Hz YUV4:4:4, 18G, HDR10
- Support 1x VGA, 1x Type-C, 2x HDMI input
- Support 1x HDMI and HDBT output simultaneously
- Transmit up to 70m under 1080p@60Hz, 40m under 4K@60Hz
- HDCP 2.2/1.4 compliant
- Audio sampling rate upto 192KHz,support max 7.1CH
- Support Analog audio embedded, Mic input
- Support Analog/SPDIF audio extraction, analog output support PCM2.0,SPDIF output support Dolby, DTS, max 5.1CH
- With wide-band Bi-Direction IR routed control(38~56KHz), IR extend to control device
- Support RS232 pass through
- Support micro USB port for firmware upgrade
- Support Panel Button with LCD, IR Routing, RS232, TCP/IP, PC Tool Control
- Support POC (receiver powered by HDBaseT switch)
- DC 24V/1A power supply

## 2. Package Contents

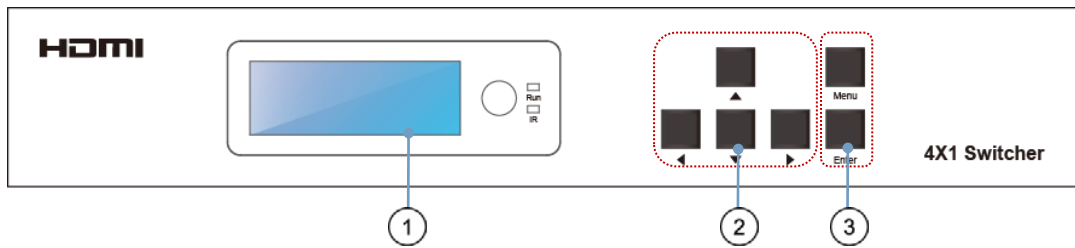
- 1). 1x Main Unit (HDBaseT Switch)
- 2). 1x Power supply DC24V/1A
- 3). 1x Remote control
- 4). 2xIR Transmitter cables, 3x Wide-Band IR Receiver cables
- 5). 1x CD for control software & user manual
- 6). 1x Receiver

## 3. Specifications

Operating Temperature Range	-5 to +40°C(23 to +104 °F)
Storage Temperature Range	-10 to +60°C(14 to +140 °F)
Operating Humidity Range	5 to 90 % RH (no condensation)
Input Video Signal	0.5-1.0 volts p-p
Input DDC Signal	5 volts p-p (TTL)
Bandwidth	18Gbit/s
Video Format Supported	4K@60Hz, YUV4:4:4 4k@30Hz/1080P/1080i/720P/576P/480P
HDCP Compliant	HDCP2.2 and HDCP1.4
Output Video	HDMI2.0 and HDMI 1.4 (over HDBaseT and HDMI)
Audio Format Supported	PCM2.0, Dolby5.1, DTS5.1 digital audio
Maximum Transmission Distance	1080P 70m, 4K 40m(HDBT output),4K/6M,1080p/15M(HDMI output)
Power Consumption	16.5watts (Max.)
Dimensions	235 L x 137W x 39H mm
Mass (Main Unit)	1.175KG

## 4. Panel Descriptions

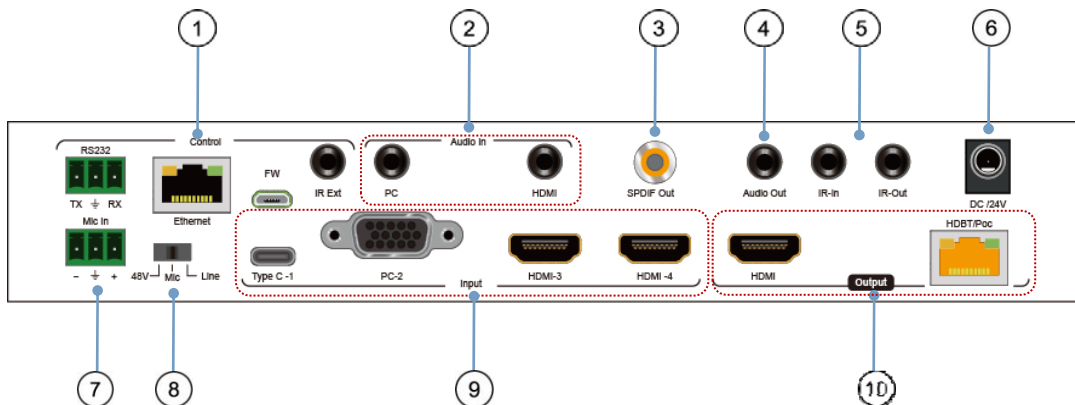
### Front Panel



- ① LCD: Showing HDBaseT switch informations      ② Function button: Up, Down, Left, Right  
 ③ Function button: Menu, Enter

◀	Left Guide button	Short press:left/right choose function option in submenu,in MIC input VOL/analog out VOL adjustment: left(-) right(+)
▶	Right Guide button	
▲	Up Guide button	Short press:up/down choose function option in submenu
▼	Down Guide button	
Enter	Confirm button	Short press:enter submenu/back to last status
Menu	Main Menu	Short press:display/direct back to main Menu

### Rear Panel

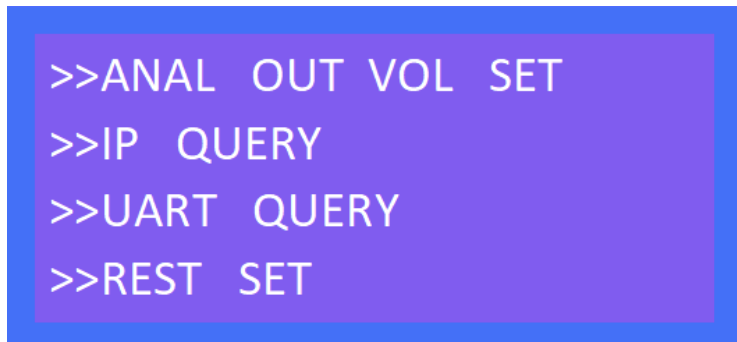
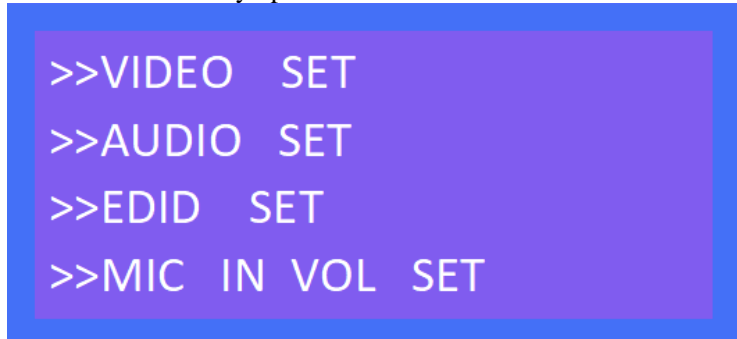


- ① **RS232**: RS232 pass through/RS232 for PC tool control; **Ethernet**: IP/Web control;  
**FW**: micro usb port for firmware update; **IR Ext**: IR extender for control HDBaset switch
- ② **PC**: Audio in for VGA input only; **HDMI**: Analog PCM2.0 audio embedded
- ③ Audio SPDIF out(Dolby, DTS, Max 5.1CH)
- ④ Analog PCM2.0 audio out
- ⑤ IR-in/IR Out for remote controlling
- ⑥ DC 24V/1A power supply
- ⑦ MIC in:for 48V microphone/MIC device(MIC mode,support HDMI/Type C/VGA)
- ⑧ **MIC switch**: Left switch for 48v microphone mode;  
 Middle switch for MIC mode; Right switch for line mode(Analog PCM2.0 audio embedded)
- ⑨ **Video input**: **TypeC-1**: Type C in; **PC-2**: VGA in; **HDMI in**: HDMI-3/HDMI-4
- ⑩ **Video output**: **HDMI**: HDMI out; **HDBT/POC**: HDBT out (connect HDBaset receiver/other HDBaset products/Cascade)

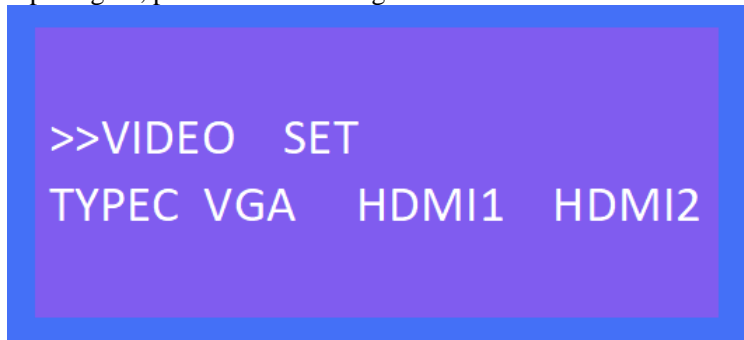
**Note:**When you need to use MIC in/Analog audio embedded function,please set the audio input mode for “Analog” by panel/PC tool/Web GUI first,then switch the MIC switch to choose the audio format(48v/Mic/Line).

#### 4.1 Menu Display

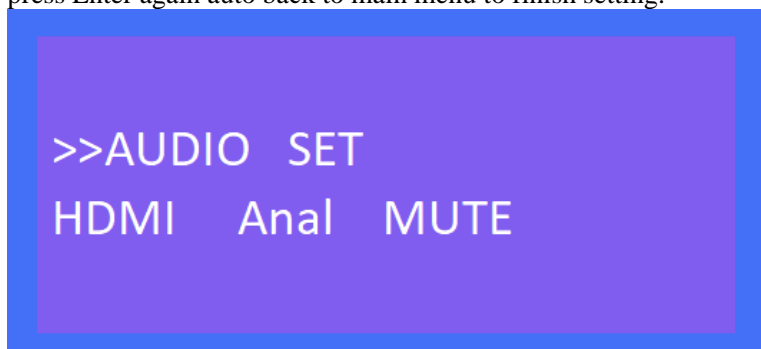
Press Menu button, menu include VIDEO SET、AUDIO SET、EDID SET、MIC IN VOL SET、ANAL OUT VOL SET、IP QUERY、UART QUERY、REST SET, press any button to highlight LED screen, and auto turn dark without any operation after 20 seconds.



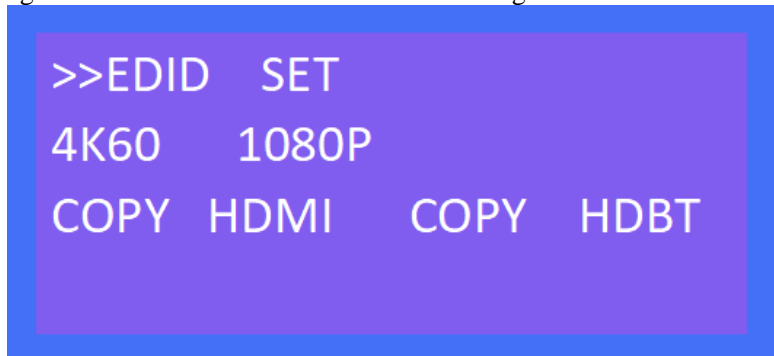
1). VIDEO SET: For input switch, select VIDEO SET and press enter button, press left/right button select current input signal, press enter button again auto back to main menu to finish setting.



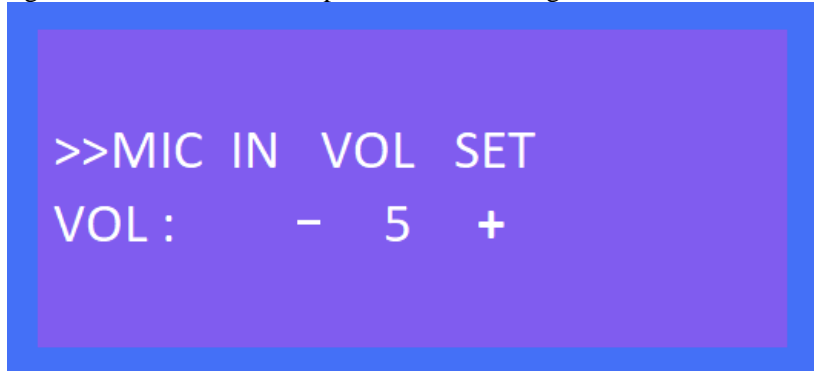
2). AUDIO SET: Audio input set, support 3 modes- HDMI(audio input for signal), Anal(audio embedded), Mute(silent mode), select AUDIO SET, press enter button, then press left/right button select audio input, press Enter again auto back to main menu to finish setting.



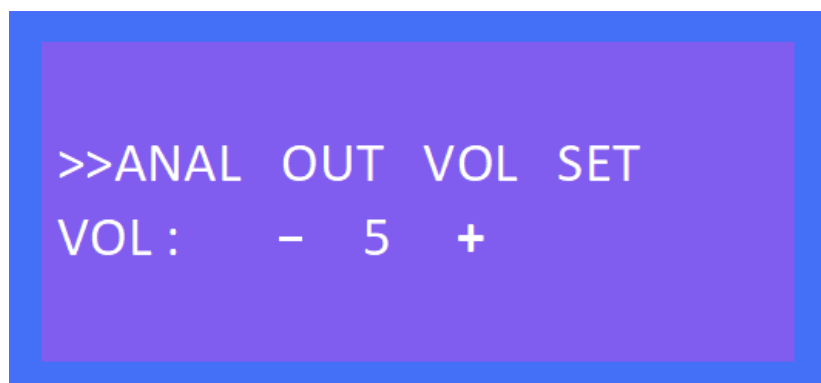
3). EDID SET: Support 4 modes- 4K60(Default),1080P(Default),COPY HDMI,COPY HDBT.  
 Select EDID SET, press Enter button,then press left/right button to select EDID for input, press Enter button again auto back to main menu to finish setting.



4). MIC IN VOL SET: MIC input volume adjustment from 0~10,maximum 10 for loudest sound,minimum 0.  
 Select MIC IN VOL SET,press Enter button for volume control mode,press left button to decrease vol.,press right button to increase vol.,press Enter button again auto back to main menu to finish setting.



5). ANAL OUT VOL SET: Analog audio out volume adjustment from 0~10,maximum 10 for loudest sound, minimum 0. Select ANAL OUT VOL SET,press Enter button for volume control mode,press left button to decrease vol.,press right button to increase vol.,press Enter button again auto back to main menu to finish setting.



6). IP QUERY: Default IP address 192.168.1.168,DHCP: off ,press left/right button select DHCP status,short press Enter button and back to up one level.

```
>>IP  QUERY
192 . 168 . 1 . 168
DHCP :    OFF      ON
```

7). UART QUERY: Device baudrate support 9600,19200,38400,57600,115200(default),not support to modify by panel button,select UART QUERY,short press Enter button to check current baudrate.

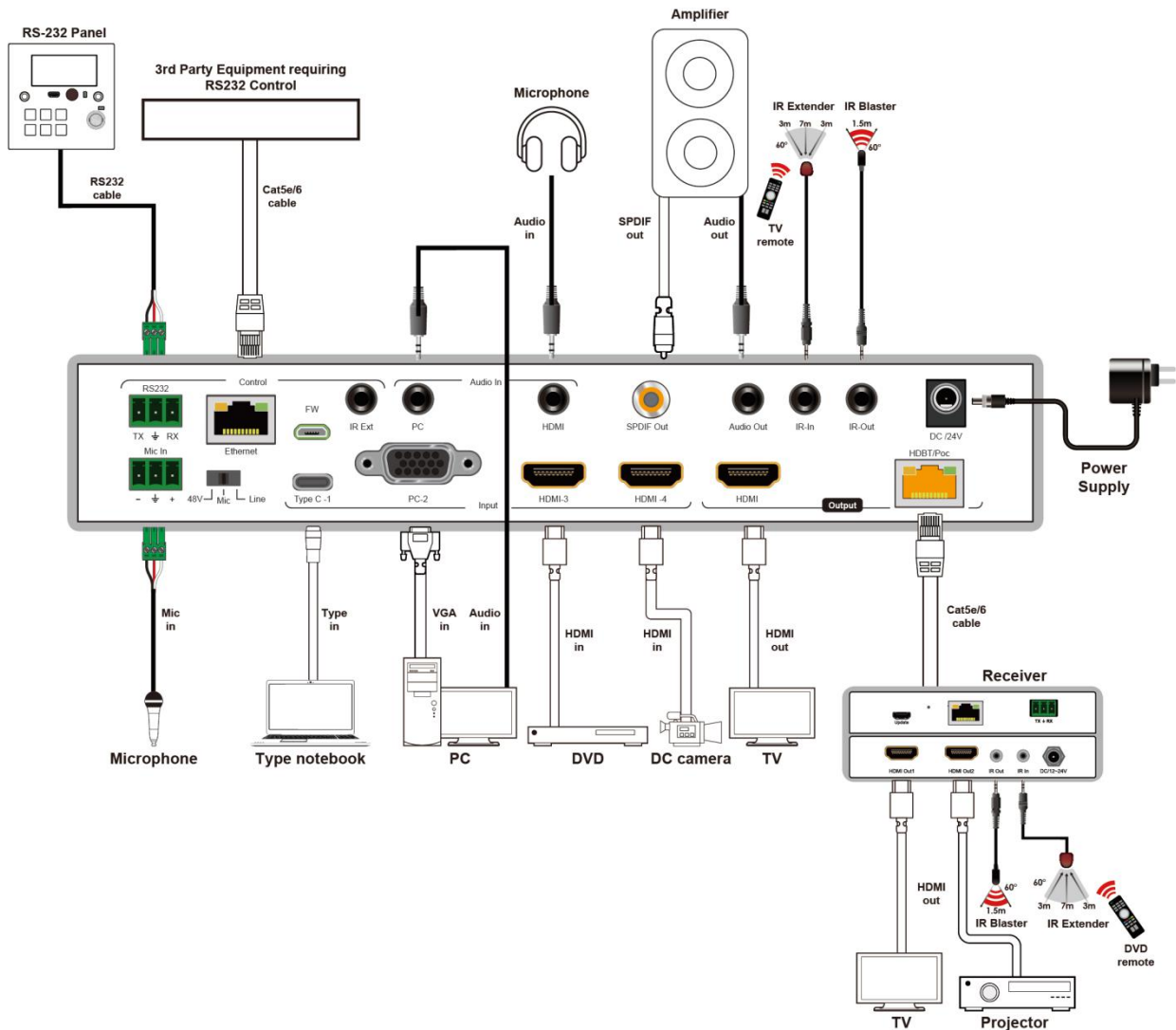
```
>>UART  QUERY
UART1 BUAD : 115200
```

8). SYSTEM RESET: Factory reset,short press Enter button direct and reset to factory defaults.

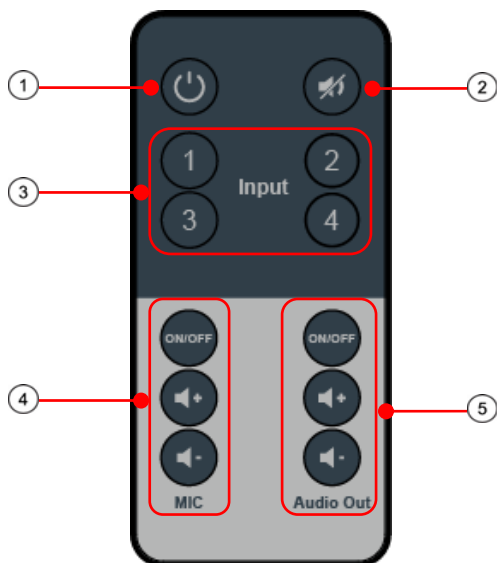
```
>>SYSTEM  RESET
Please  press  enter  key...
```



## 5. Application Diagram



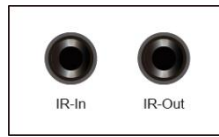
## 6. Remote Control Description



- ① Standby Mode
- ② Mute
- ③ Video input: “1” for TypeC-1;  
“2” for PC-2(VGA);  
“3” for HDMI-3;  
“4”for HDMI-4;
- ④ MIC in (ON/OFF)/VOL control;
- ⑤ Analog audio out (ON/OFF)/VOL control;

## 7. IR system

The HDBaseT switch can pass the IR signal through the IR system to the HDMI source or pass the IR signal from the HDMI source to the HDMI sink.



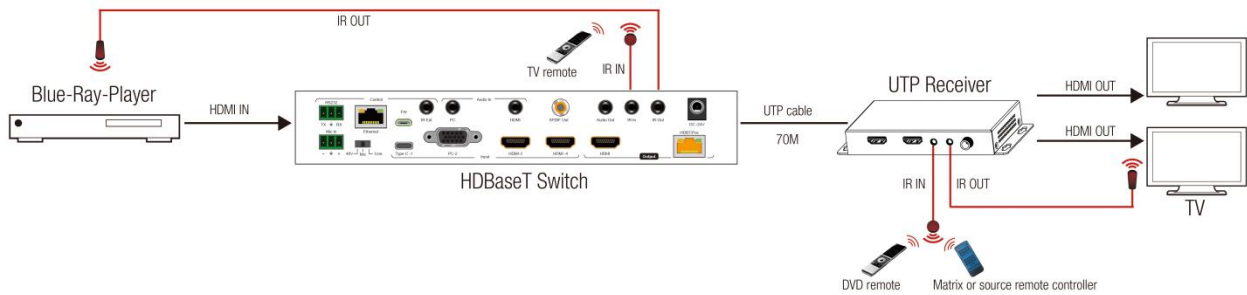
### Dual way IR using:

Step1: “IR IN” is for HDBT output, “IR OUT” is for input channel.

Step2: HDBaseT receiver support connect with IR-RX cable to control the HDBaseT switch/DVD by remote.

Step3:HDBaseT switch support connect with IR-RX cable(IR in) to control TV by remote.

Step4: HDBaseT switch “IR Ext” support connect with IR-RX cable to control the HDBaseT switch by remote.



## 8. PC Tool Control

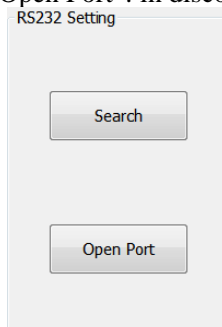
- 1).Download the “swe01b\_4-Input HDMI Switcher.exe”software to your computer, then open it.
- 2).Using USB to RS232 cable connect to the RS232 port of HDBaseT switch.
- 3).Press “Search” button to find out the right port then click “Open Port”.

### 8.1 Port setup

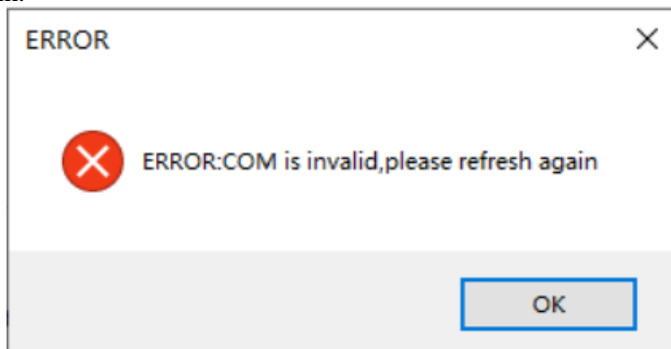
- 1). Communication port setting: in PC windows system run the “swe01b\_4-Input HDMI Switcher.exe”software,in RS232 INFO. ,select correct port (communication port) and baud (should be same to baudrate in UART QUERY for connection)



- 2). Click “Search”refresh communication port
- 3). “Open Port”: in disconnect status,”Close Port”: connected to device.



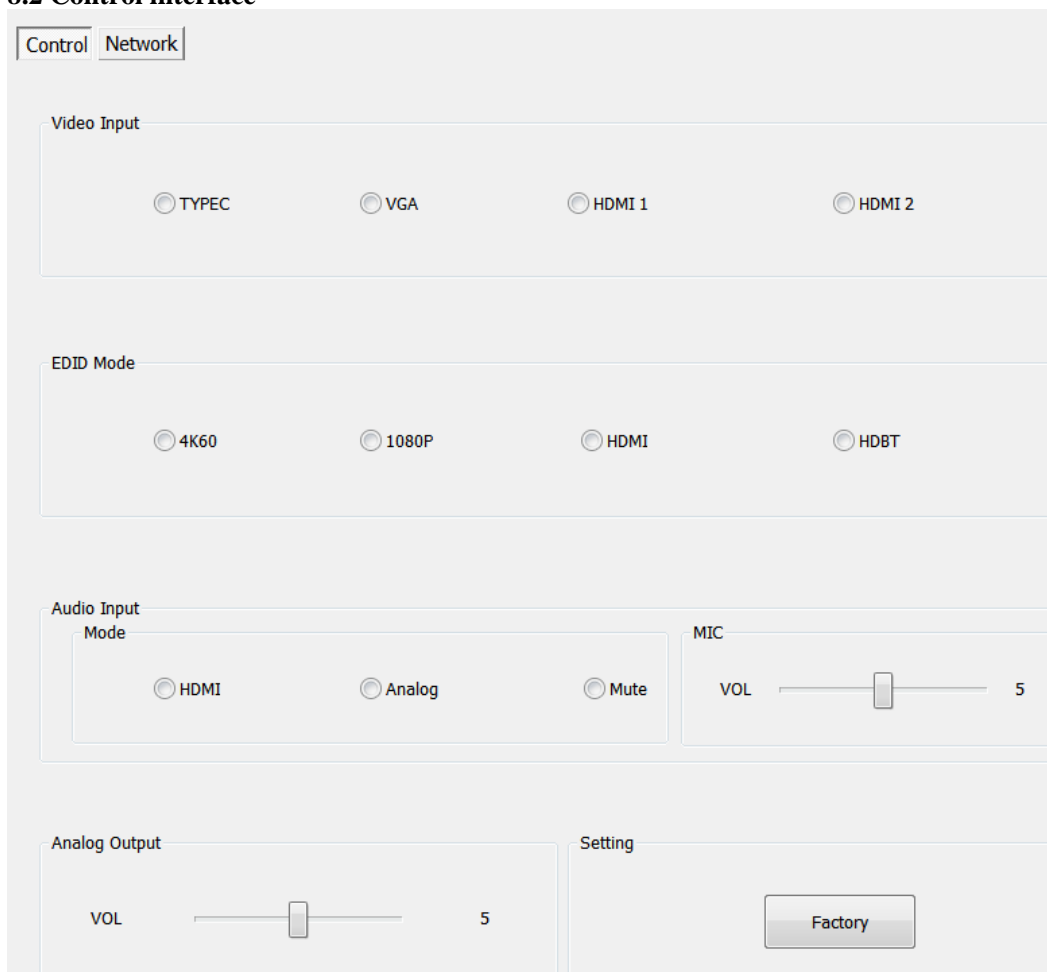
4).If popup“ERROR” means COM port is invalid and not be connected correctly,please press “OK”and refresh again.



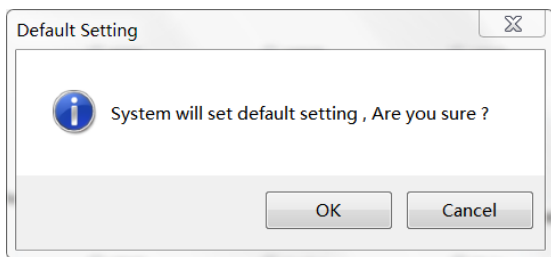
5). Below will show current COM port info. and baudrate when connected to device:



## 8.2 Control interface



- 1). Video Input: Switch Type C, VGA, HDMI input.
- 2). EDID Mode:  
**4K60: Default EDID 4K@60Hz**  
**1080P: Default EDID 1080P@60Hz**  
**HDMI: Copy HDMI out EDID for input(Copy mode)**  
**HDBT: Copy HDBT out EDID for input(Copy mode)**
- 3). Audio Input Mode: click to choose HDMI,Analog,Mute option (HDMI: audio of Type C/VGA/HDMI, Analog: audio embedded/MIC in)
- 4). MIC: VOL control,the number “5”shows the current volume.(Pls note:you can only set the MIC VOL when choose “Analog” for audio input)
- 5). Analog Output: VOL control,the number “5”shows the current volume.  
(Pls note:you can not set VOL when audio input mode is “Mute”)
- 6) . Setting: Factory reset.



**Note:**Please set the audio input mode for “Analog” first by panel/PC tool/Web GUI when you need to use MIC in/Analog audio embedded function.

### 8.3 Network Interface for device

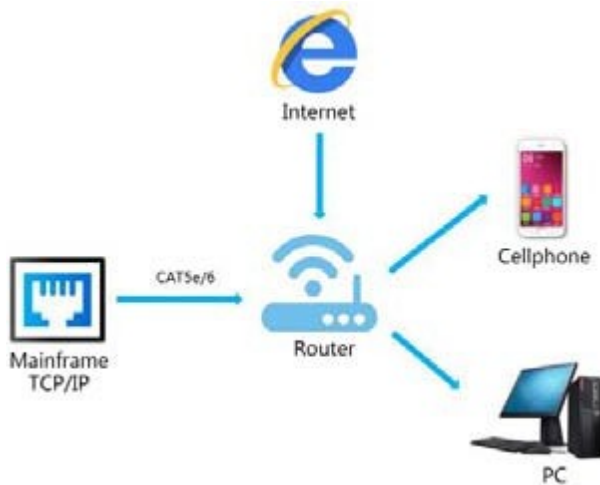
- ① Mac Address: **Can not modify**
- ② IP Address: support modify
- ③ Net Mask Address: support modify
- ④ Gate Way Address: support modify

- ⑤ DHCP ON/OFF
- ⑥ Apply: Click to confirm modified static IP

Note: When you click for DHCP ON, then IP Address, Net Mask Address, Gate Way Address frames all become grey and can not be modified.

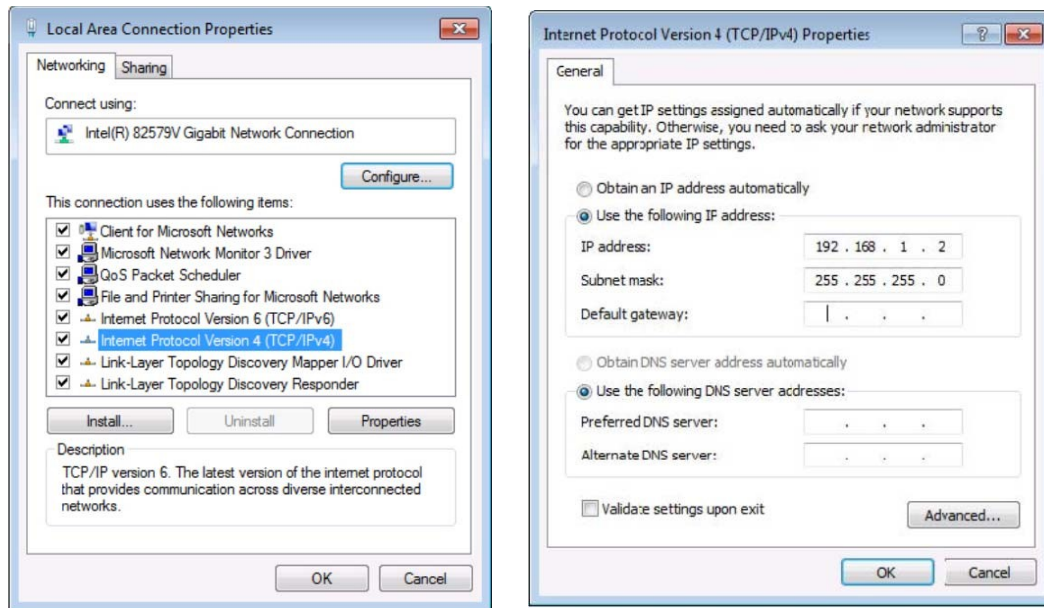
MAC Address	<input type="text"/>
IP Address :	<input type="text" value="192.168.1.168"/>
Net Mask Address	<input type="text" value="255.255.255.0"/>
Gate Way Address :	<input type="text" value="192.168.1.1"/>
DHCP :	<input type="button" value="DHCP ON"/>
<input type="button" value="Apply"/>	

## 9. WEB Control



### 9.1 Change the IP address of your PC.

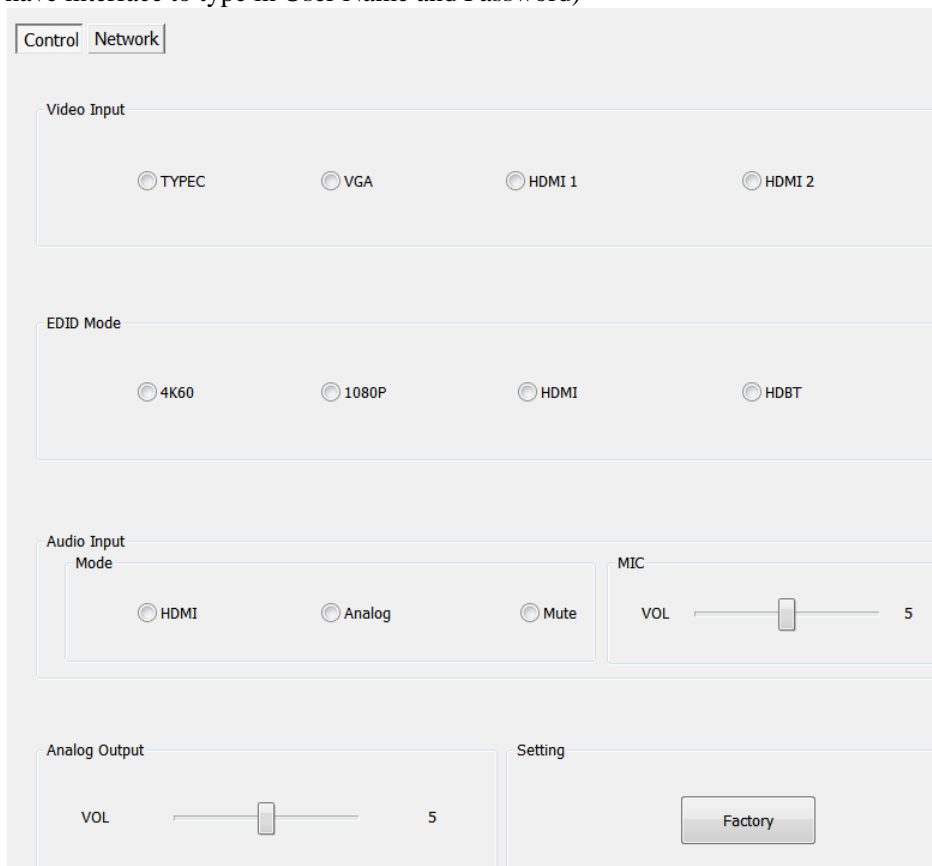
- 1). Connect the Ethernet port of HDBaseT switch to the Ethernet port on PC by a straight pin to pin cable with RJ45 connectors.
- 2). Configure your PC as follows:
  - ① Click **Start > Control Panel > Network and Sharing Center**.
  - ② Click **Change Adapter Settings**.
  - ③ Highlight the network adapter you want to use to connect to the device and click **Change settings of this connection**.
- 3). The local Area commotion properties window for Network selection appears as below.
- 4). Click the Highlight **Internet Protocol Version 4 (TCP/IPv4)**.
- 5). Click **Properties**.
- 6). Select **Use the following IP Address** for static IP addressing and fill in the details.  
For TCP/IPv4 you can use any IP address in the range 192.168.1.1 to 192.168.1.255 (excluding 192.168.1.168).
- 7). Click **OK**.
- 8). Click **Close**.



(Default IP Address: 192.168.1.168; MASK: 255.255.255.0; Gateway:192.168.1.1)

**9.2 Enter Web and Control.**

- 1). Enter the default IP address of the matrix: 192.168.1.168.
- 2). You will see following picture and control:  
(No have interface to type in User Name and Password)



(The same interface to PC tool, please see the description in PC tool control)

Note: web control is recommended to use Google, fire fox, IE8 and above browsers, using other browsers may not be compatible.

## 10. Command Control

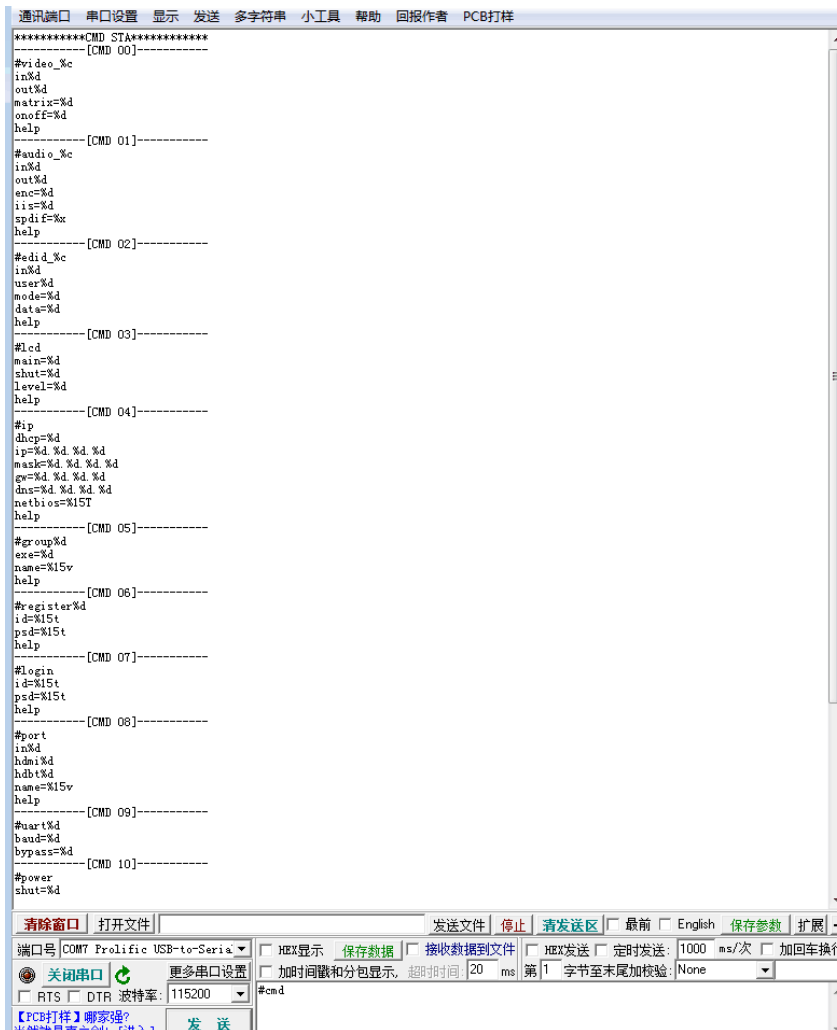
Control software operation:

The serial control software is illustrated with SSCOM32 as an example. Basic Settings:



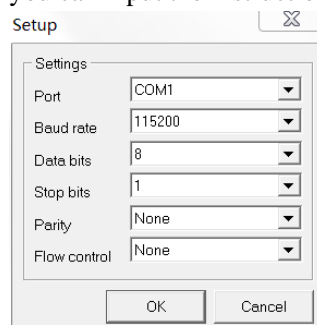
Double-click the software in the installation package to run specifically (as shown in figure 1 ) and install the RS232 software on the computer.

**Enter the main interface of the software, as shown in the figure below.**



Please use USB to RS232 cable connect PC and device,open RS232 software.

In the parameter configuration area, select the serial number that the serial port connect with PC, and set the baud rate of the communication protocol: 115200 (default), data bits: 8. Stop bits: 1, Parity: None, you can input the instruction in the command input area and control the machine or remote receiver.



**Instructions:**

- 1). All commands start from “#”, “%d” parameters No.
- 2). The “\_” in the commands cannot omit.

**The following table is only an example. Please refer to the list of instructions.**

Instruction description	Command format , (%d: parameter number)	parameter 1	parameter 2
Command Query	#cmd		
Video Input Channel Switch	#video_d in%d	1:TYPEC 2:VGA 3:HDMI1 4:HDMI2	
Audio embedded in	#audio_d enc=%d value=%d	0:HDMI 1:IIS,MIC 2:Mute	MIC VOL adjust numerical range(0~10)
Audio IIS out VOL Set	#audio_d iis=%d	VOL adjust numerical range(0~10)	
EDID Mode Set	#edid_d mode=%d	0:(4K60),1:(1080p) 2:(HDMI),3:(HDBT)	
Factory Reset	#factory		
Baudrate Set	#uart baud=%d		0:9600 1:19200 2:38400 3:57600 4:115200
IP Query	#ip help?		
DHCP Set	#ip dhcp=%d	0:Close ,1:Open	

Please refer to above “Command list” for details.

For example:

Operation format

Video Input Channel Switch: #video\_d in1 (Switch to Type C input)

Audio embedded in: #audio\_d enc=1 value=7 (MIC VOL adjust to 7)

Audio IIS out VOL Set: #audio\_d iis=7 (Analog audio VOL adjust to 7)

EDID Mode Set: #edid\_d mode=2 (Copy EDID of HDMI out for input)

Baudrate Set: #uart baud=0 (Current baudrate set is 9600)

DHCP Set: #ip dhcp=1 (DHCP open)

**11. Power Off and Reboot Input Priority Mode**

When HDBaseT switch reboot and it inspect the current input signal in “None” status,device will auto switch to higher priority input signal(If there is no higher priority input than current one,it will switch lower priority input).

Priority table for input:

Signal for Input	Priority	Switch Condition
HDMI 1	The highest	Reboot and inspect HDMI1,if none signal,device switch to next lower priority input
HDMI 2	Second	Reboot and inspect HDMI 2,if none signal,device auto switch to higher priority input,if not,it switch to next lower priority input of signal
Type C in	Third	Reboot and inspect Type C,if none signal,device auto switch to higher priority input,if not,it switch to next lower priority input of signal(VGA)
VGA in	Fourth(the lowest)	Reboot and inspect VGA,if none signal,device auto switch to higher priority input,if not,it will keep current input of signal(VGA)



**Note:**

- 1).If current input have signal,device will not auto switch to other input when reboot,it will keep current input.
- 2).When all input no have signal,device save last switch port when reboot.
- 3).The priority mode only valid when device with signal input.

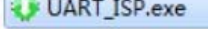
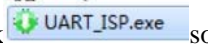
**12. RS232 Pass through**

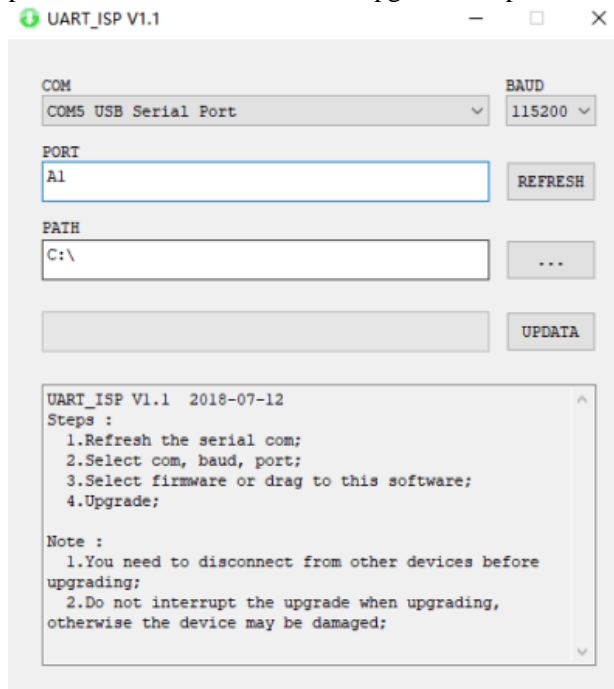
By RS232 Command , the HDBaseT switch can send RS232 data to control the receivers ,also the receiver can send RS232 data to control the HDBaseT switch.

Please refer to the command list which included in the manual.

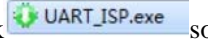
**13. Micro USB for Firmware Upgrade**

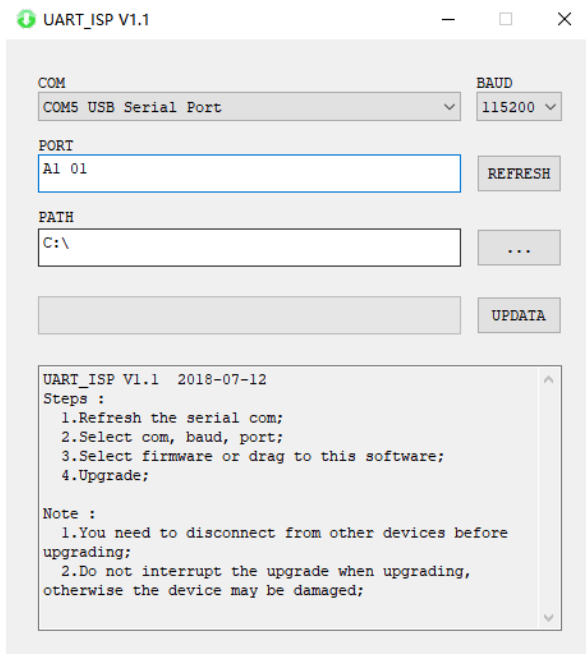
**13.1 MCU application layer upgrade**

- 1). The user should use the CD in colorbox,read and install software  on PC;
- 2). Connect unit to PC with USB cable from micro USB port,click  software,REFRESH and choose correct COM port that connect to product,and baudrate 115200(default).The baud rate setting is consistent with the host baud rate.
- 3). Type in “A1” in PORT and choose update program file in PATH,then click UPDATA wait for update until it prompt “Succeed” informations and upgrade completed:

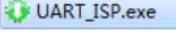


**13.2 GUI application layer upgrade**

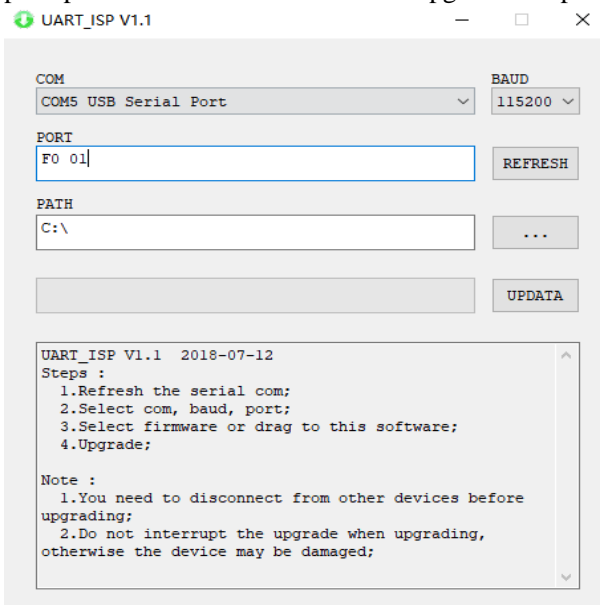
- 1). Connect unit to PC with USB cable from micro USB port,click  software,REFRESH and choose correct COM port that connect to product,and baudrate 115200(default).The baud rate setting is consistent with the host baud rate.
- 2). Type in “A1 01” in PORT and choose update program file in PATH,then click UPDATA wait for update until it prompt “Succeed” informations and upgrade completed:



### 13.3 GUI Web upgrade

1).Connect unit to PC with USB cable from micro USB port,click  software,REFRESH and choose correct COM port that connect to product,and baudrate 115200(default).The baud rate setting is consistent with the host baud rate.

2).Type in “F0 01” in PORT and choose update program in PATH,then click UPDATA wait for update until it prompt “Succeed” informations and upgrade completed:



**Note:**If the upgrade progress bar is stopped in the middle of the upgrade, then the host will need to be rebooted, then the serial port will be upgraded.

## **MAINTENANCE**

Clean this unit with a soft, dry cloth. Never use alcohol, paint thinner or benzine to clean this unit.

## **PRODUCT SERVICE**

### **(1) Damage requiring service:**

The unit should be serviced by qualified service personnel if:

- (a) The DC power supply cord or AC adaptor has been damaged;
- (b) Objects or liquids have gotten into the unit;
- (c) The unit has been exposed to rain;
- (d) The unit does not operate normally or exhibits a marked change in performance; The unit has been dropped or the cabinet damaged.

**(2) Servicing Personnel:** Do not attempt to service the unit beyond that described in these operating instructions. Refer all other servicing to authorized servicing personnel.

**(3) Replacement parts:** When parts need replacing ensure the servicer uses parts specified by the manufacturer or parts that have the same characteristics as the original parts. Unauthorized substitutes may result in fire, electric shock, or other Hazards.

**(4) Safety check:** After repairs or service, ask the servicer to perform safety checks to confirm that the unit is in proper working condition.

## **WARRANTY**

If your product does not work properly because of a defect in materials or workmanship, our Company (referred to as "the warrantor" ) will, for the length of the period indicated as below, **(Parts)2 Year, Labor(90) Days** which starts with the date of original purchase ("Limited Warranty period"), at its option either (a) repair your product with new or refurbished parts, or (b) replace it with a new or a refurbished product. The decision to repair or replace will be made by the warrantor.

During the "Labor" Limited Warranty period there will be no charge for labor.

During the "Parts" warranty period, there will be no charge for parts. You must mail-in your product during the warranty period. This Limited Warranty is extended only to the original purchaser and only covers product purchased as new. A purchase receipt or other proof of original purchase date is required for Limited Warranty service.

## **MAIL-IN SERVICE**

When shipping the unit carefully pack and send it prepaid, adequately insured and preferably in the original carton. Include a letter detailing the complaint and provide a day time phone and/or email address where you can be reached.

## **LIMITED WARRANTY LIMITS AND EXCLUSIONS**

1). This Limited Warranty ONLY COVERS failures due to defects in materials or workmanship, and DOES NOT COVER normal wear and tear or cosmetic damage.

The Limited Warranty ALSO DOES NOT COVER damages which occurred in shipment, or failures which are caused by products not supplied by warrantor, or failures which result from accidents, misuse, abuse, neglect, mishandling, misapplication, alteration, faulty installation, set-up adjustments, misadjustment of consumer controls, improper maintenance, power line surge, lightning damage, modification, or service by anyone other than a Factory Service center or other Authorized Servicer, or damage that is attributable to acts of God.

2). THERE ARE NO EXPRESS WARRANTIES EXCEPT AS LISTED UNDER "LIMITED WARRANTY COVERAGE". THE WARRANTOR IS NOT LIABLE FOR INCIDENTAL OR CONSEQUENTIAL DAMAGES RESULTING FROM THE USE OF THIS PRODUCT, OR ARISING OUT OF ANY BREACH OF THIS WARRANTY. (As examples, this excludes damages for lost time, cost of having someone remove or re-install an installed unit if applicable, travel to and from the service, loss of or damage to media or images, data or other recorded content. The items listed are not exclusive, but are for illustration only.)

3). PARTS AND SERVICE, WHICH ARE NOT COVERED BY THIS LIMITED WARRANTY, ARE YOUR RESPONSIBILITY